

A SCHEMATIC ON WIRELESS ADHOC NETWORK THROUGH DIFFERENT PARAMETERS

RAJENDRA BABU GADDAM

Associate Tech Specialist
Tech Mahindra Limited, Maharashtra
Email Id: babu.prince@gmail.com

ABSTRACT: A wireless ad-hoc network is a collection of nodes which are self-arranging and self-directing in nature. All hubs are associated by remote connections and are allowed to move arbitrarily. Subsequently, the system topology continues changing quickly and inconsistently. These sorts of systems are exceptionally adaptable and needn't bother with any current foundation. All together build up correspondence inside the system and to find the courses between the hubs a steering convention is utilized so messages might be conveyed in an opportune way. The essential goal of a specially appointed system steering convention is precise and effective course foundation between a couple of hubs. Course development ought to be finished with at least overhead and least utilization of data transfer capacity. The real test in these sorts of systems is finding a way between the correspondence end purposes of hubs that are versatile. In this way, these sorts of systems are likewise called multi-jump specially appointed systems. This paper depends on investigation of specially appointed remote systems and its connected different issues in structures and conventions. This paper gives a review of different issues and difficulties in different conventions.

Key words: Wireless system, Ad hoc Network, Multi-jump, Routing conventions, Infrastructure less.

1.0 Introduction:

Research on Wireless Ad Hoc Networks has been continuous for a considerable length of time. The history of wireless ad hoc networks can be traced back to the Defense Advanced Research Project Agency (DARPA) packet radio networks (PRNet), which evolved into the survivable adaptive radio networks (SURAD) program Ad hoc networks have played an important role in military

applications and related research efforts, for example, the global mobile information systems (GloMo) program and the near-term digital radio (NTDR) program. Recent years have seen a new spate of industrial and commercial applications for wireless ad hoc networks, as viable communication equipment and portable computers become more compact and available. Since their emergence in 1970's, wireless networks have become increasingly popular in the communication industry. These networks provide mobile users with ubiquitous computing capability and information access regardless of the users' location. There are currently two variations of mobile wireless networks: infra-structured and infra-structure less networks. The infra-structured networks have fixed and wired gateways or the fixed Base-Stations which are connected to other Base-Stations through wires. Each node is within the range of a Base-Station. A "Hand-off" occurs as mobile host travels out of range of one Base-Station and into the range of another and thus, mobile host is able to continue communication seamlessly throughout the network. Example applications of this type include wireless local area networks and Mobile Phone. The remainder of the paper is organized as follows. The next section presents a discussion the basic concepts of Cellular and Ad-Hoc Wireless Networks. Another section discusses Applications of Ad-Hoc

Wireless Networks, while a later section describes Issues in Ad-Hoc Wireless Networks. The paper then presents the various issues and challenges in designing of various ad-hoc wireless networks protocols and other ad-hoc wireless networks area. Finally the paper concludes with the introduction of some recent and open area for research and investigation.

CELLULAR AND AD-HOC WIRELESS NETWORKS:

Cellular systems for mobile communications implement Space Division Multiplexing (SDM). Each base station covers a certain area i.e. a cell. The radius of a cell can vary from tens of meters in buildings, and hundreds of meters in cities, up to tens of kilometers in the countryside. The shape of-cells are never perfect circles or hexagons, but the shape depend on the environment on climate situation, and seldom on the system load. A mobile telecommunication system is the typical example that uses this approach the current cellular systems are delegated the foundation subordinate systems. The way setup for a call between two hubs is finished through the base station. Impromptu remote systems are characterized as the classification of remote systems that use multi-bounce radio transferring and curve equipped for working without the help of any settled framework they are likewise called as infra-structure less systems). The absence of any central coordinator or base station makes routing a complex one compared to cellular networks. In a cellular network the presence of base stations simplifies routing and resource management as the routing decisions are made in a centralized manner with more information about the destination node. But in an ad hoc wireless network, the routing and resource

management are done in a distributed manner in which all nodes coordinate to facilitate communication among the nodes. This requires each node to be more intelligent so that it can function both as a network host for transmitting and receiving data and also as a network router for routing packets. That is why the mobile nodes in ad hoc wireless networks are more complex than that of cellular networks.

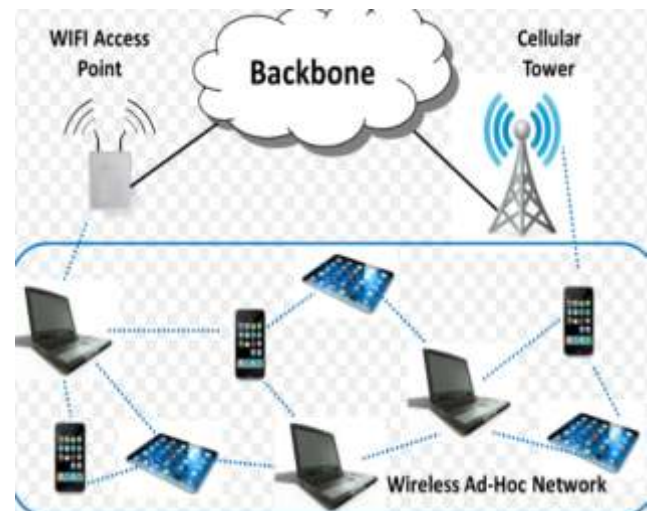


Figure: Cellular and ad-hoc wireless networks

Characters and Fundamental Challenges of Wireless Ad-hoc Networks:

Since Wireless Ad-hoc Networks are innately not quite the same as the outstanding wired systems, it is a completely new engineering. Accordingly a few difficulties rise from the two key viewpoints: self-association and remote transport of data First of all, since the hubs in a Wireless Ad-hoc Network are allowed to move self-assertively whenever. So the networks topology of MANET may change randomly and rapidly at unpredictable times. This makes routing difficult because the topology is constantly changing and nodes cannot be assumed to have persistent data storage. In the worst case, we do not even know whether the

node will still remain next minute, because the node will leave the network at any minute. Bandwidth constrained is also a big challenge. Wireless links have significantly lower capacity than their hardwired counterparts. Also, due to multiple access, fading, noise, and interference conditions etc. the wireless links have low throughput. Energy constrained operation. Some or all of the nodes in a MANET may rely on batteries. In this scenario, the most important system design criteria for optimization may be energy conservation. Limited physical security: Mobile networks are generally more prone to physical security threats than are fixed cable networks. There are increased possibility divesdropping, spoofing and denial-of-service attacks in these networks.

Advantages of cellular systems:

With small cells are the following:

- Higher capacity Implementing SDM permits frequency reuse.
- Less transmission power Power side is not a big problem for a base station; it is certainly problematic for a mobile station.
- Local interference only with small cells, mobile stations and base stations only have to deal with 'local' interference.

Ad hoc Networks Characteristics:

Mobility Nodes can be quickly repositioned. We can have individual random mobility, group mobility etc. The mobility model can have mainly significant force on the selection of a routing method and can thus influence the performance.

Multihopping: A multi hop arranges is where the ways from source to goal go through various hubs. Specially appointed nets as often as possible uncover different

bounces for deterrent transaction, range reuse and vitality protection.

Self-organization:The ad hoc network must unconventionally determine its own configuration parameters including addressing, routing, clustering, identification of position, power control etc.

Energy conservation:Most impromptu hubs have restricted power supply and no ability to create their own energy Vitality effective convention outline is basic for life span of the mission.

Literature review:

David B. Johnson,(2010) Mobile Ad-hoc Networks are a collection of two or more devices equipped with wireless communications and networking capability. These devices can communication with other nodes that immediately within their radio range or one that is outside their radio range. For the later, the nodes should deploy an intermediate node to be the router to route the packet from the source toward the destination the most important thing for the networks is security. It is even important for Wireless Ad hoc Networks because its applications are in military.

Amresh Kumar(2013)Route construction should be done with a minimum of overhead and minimum consumption of bandwidth. The major challenge in these kinds of networks is finding a path between the communication end points of nodes that are mobile. Therefore, these kinds of networks are also called multi-hop ad-hoc networks. ad-hoc wireless networks and it's related various issues in architectures and protocolsWe have also made an attempt to clarify what an ad hoc network actually is and what issues and challenges are faced by an ad hoc mobile wireless networks in finding a path

between the communication end points of nodes that are mobile. In this paper we have also discussed the description of various routing methods for ad hoc wireless networks.

D. Johnson, Y. Hu, and D. Maltz (2007).

The wireless ad hoc networks consist of a collection of wireless nodes, that communicate over a common wireless medium. The nodes communicate without an infrastructure, such as base station, wired access point, etc. The establishment of the networks must be in a distributed and decentralized manner. Therefore, the complexity of the networks is in the nodes self. The nodes must be able to solve network's problem, such as routing and security. The wireless infrastructure networks support great mobility and very popular among the folks. If a infrastructure is defect, the cell established by this infrastructure will be gone too. The nodes in this cell can't communicate again.

Ashwini K. Pandey and Hiroshi Fujinoki,(2005). a collection of two or more devices or nodes or terminals with wireless communications and networking capability that communicate with each other without the aid of any centralized administrator also the wireless nodes that can dynamically form a network to exchange information without using any existing fixed network infrastructure. And it's an autonomous system in which mobile hosts connected by wireless links are free to be dynamically and sometime act as routers.

3.0 Architecture of wireless networks:

Wireless LAN is a traditional LAN architecture extended with a wireless interface to service small lowpowered portable terminals capable of wireless access. The wireless LAN is further connected to a more extensive fixed

network such as LAN or WAN. Wireless LANs have limited range and are designed to be used only in local environments. There are two types of wireless LAN architectures: ad-hoc networks and infrastructure networks. The Wide-Area Wireless Networks are special mobile radio networks that provide wide coverage for low bandwidth data services. In paging networks the service is usually receive-only and has very low bandwidth. The initial applications for satellite systems are voice and paging. Additional services planned include messaging and fax transmission. Wireless networks communicate by modulating radio waves or pulsing infrared light. Wireless communication is linked to the wired network infrastructure by stationary transceivers.

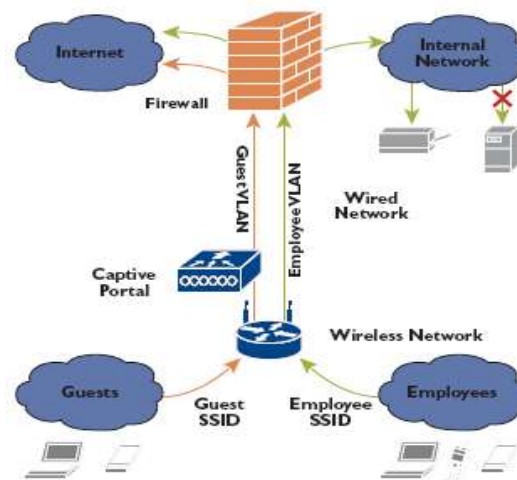


Figure: Architecture of wireless networks

Disconnection:-Wireless communications suffer from frequent disconnections due to a higher degree of noise and interference as well as the process of inter-cell hand-offs. Disconnections can be hidden by asynchronous operation.

Heterogeneous network:-To achieve wireless communication a mobile host must get connected to different and heterogeneous networks. The general problem of heterogeneity can be addressed

by exploiting emerging distributed systems.

Bandwidth and Interface Variability:-

Bandwidth can shift one to four orders of magnitude, depending on whether the system is plugged in or using wireless access or switching interfaces, e.g. from infrared to radio when the user moves from indoors to outdoors. Mobile applications have to adapt their behavior properly.

Quality of Service:

With the rapid development of Internet technology, when people for the Best effort service is no longer satisfied, how to get more bandwidth, how to reduce the mistakes, how to reduce the delay phenomenon, making Quality of Service (QoS) related research, including the Integrated Service (RSVP), Differentiated Service, etc., has become an important research topic. In the above-mentioned several agreements, most of them are made in the last two years, only for the basic mode of operation be defined, there is no consideration of QoS, only the ABR (Associativity Based Routing), SSR (Signal Stability Routing) and CEDAR (Core -Extracted Distributed Ad hoc Routing) and so there are three kinds of QoS-related functions

Table: Shows some of application for the Ad Hoc Networks

Applications	The Possible Service of Ad Hoc Networks
Tactical networks	<ul style="list-style-type: none"> •Military communication. •Military operations. • in the battlefields.
Emergency services	<ul style="list-style-type: none"> •Search and rescue operations in the desert and in the mountain and so on. • Replacement of fixed infrastructure

	in case of environmental disasters • Policing • firefighting • Supporting doctors and nurses in hospitals
Coverage extension	<ul style="list-style-type: none"> • Extending cellular network access • Linking up with the Internet, intranets, and so on.

4.0 Security in Wireless Ad-hoc Networks:

Security is an important thing for all kinds of networks including the Wireless Ad Hoc Networks. It is obviously to see that the security issues for Wireless Ad Hoc Networks are difficult than the ones for fixed networks. This is due to system constraints in mobile devices as well as frequent topology changes in the Wireless networks. Here, system constraints include low-power, small memory and bandwidth, and low battery power. Mobility of relaying nodes and the fragility or routes turn Wireless Ad-hoc Network architecture into highly hazardous architectures. No entity is ensured to be present at every time and it is then impossible to rely on a centralized architecture that could realize network structure or even authentication. The people who consider the Mobile Ad hoc Networks are not a flawed architecture, while we cannot see it used in practice is only because most of its applications are in military are totally wrong. It is true that Mobile Ad hoc Networks come from the military. But perhaps those persons forgot one of the most important things: the Security! Everybody knows that the core requirement for military applications dealing with trust and security! That is to

say, security is the most important issue for ad hoc networks, especially for those security sensitive applications. As we have mentioned before, in Mobile Ad-hoc Networks, security is difficult to implement because of the networks constrains and the rapidly topology changes. After investigation, we found that there are two kinds of security related problems in the Mobile Ad-hoc Networks

Routing Protocol in Ad-hoc Networks:

Wireless Ad-hoc Networks operates without a fixed infrastructure. Multi-hop, mobility, large network size combined with device heterogeneity and bandwidth and battery power limitations, all these factors make the design of routing protocols a major challenge. Lots of researchers did tremendous work on the Wireless Ad-hoc Routing Protocols. Two main kinds of Routing Protocols are existed today: one is called table-driven protocols (including distance vector and link state), another is on-demand protocols. In table driven routing protocols, the protocols consistent and up-to-date routing information to all nodes is maintained at each node whereas in on-demand routing the routes are created only when desired by the source host. While for the on demand Routing protocols, "on demand" means that it builds routes between nodes only as desired by source nodes. It maintains these routes as long as they are needed by the sources

Energy Consumption of Wireless Ad-hoc Networks:

Energy consumption is also one of the most important performance metrics for wireless ad hoc networks, it directly relates to the operational lifetime of the networks. Mobile elements have to rely on finite source of energy. While battery technology is improving over time, the

need for power consumption will not diminish. This point will have a harmful effect on the operation time as it will have on the connection quality and bandwidth. In the Wireless Ad-hoc Networks, battery replacement may not be possible. So as far as energy consumption concerned, we should try to preserve energy while maintaining high connectivity. Each node depends on small low-capacity batteries as energy sources, and cannot expect replacement when operating in hostile and remote regions. For Wireless Adhoc Networks, energy depletion and reduction is the primary factor in connectivity degradation and length of operational lifetime. Overall performance becomes highly dependent on the energy efficiency of the algorithm.

Goal of using AD HOC / mobile ad hoc networks:

One of the original motivations for MANET is found in the military need for battlefield survivability. In the battlefield the soldiers (with or without their warfare) have to move freely without any of the restrictions imposed by wired communications devices. They still need communication device, so they can report their position, gathered information, and communicate with other soldiers. For this purpose they can't rely on an infrastructure. In some regions, such as the desert, the jungle, or mountain there is no torrential communications infrastructure. Therefore they have to establish networks without infrastructure and ad hoc networks specially MANETs support this case. The interest of MANETs increases rapidly in recent year, because ad hoc supports mobility and higher self-organizing in the networks.

Conclusion:

The presence of ad hoc networks covers the infrastructure's weakness. Since the ad hoc networks are independent from infrastructure, the nodes must be able to work together to establish a greater network. They have multi hop the packet, if they have to send a packet to a destination nodes outside their transmission range. Therefore, routing algorithms are the main challenge. Since the nodes are mobile, link between nodes are not symmetric, and the topology are always changed, the routing algorithms used in wired network must be modified or must be invented. We have also made an attempt to clarify what an ad hoc network actually is and what issues and challenges are faced by an ad hoc mobile wireless networks in finding a path between the communication end points of nodes that are mobile. In this paper we have also discussed the description of various routing methods for ad hoc wireless networks. The field of ad hoc wireless networks is rapidly rising and varying. Still many issues and challenges are

existing in this field that may need to be addressed

References:

- [1] David B. Johnson,(2010) "Routing in Ad Hoc Networks of Mobile Hosts", *Proceedings of the IEEE Workshop on Mobile Computing Systems and Applications*,
- [2] AmreshKumar(2013) "A Survey on Current & Traditional Routing Protocols for Ad Hoc Wireless Networks", *IJCSNS International Journal of Computer Science and Network Security*, VOL.13 No.10,
- [3] D. Johnson, Y. Hu, and D. Maltz (2007). "The dynamic source routing protocol (dsr) for mobile ad hoc networks for ipv4," *Network Working Group Request for Comments: 4728*,
- [4] Ashwini K. Pandey and Hiroshi Fujinoki,(2005). *Study of MANET routing protocols by GlomoSim simulator*, *International Journal of Network Management*, Volume 15, Issue 6,Pages:393 -410.
- [5] J. A. Freebersyser and B. Leinerr,(2001) "A DoD perspective on mobile ad hoc networks," in *Ad Hoc Networking*, C. E. Perkin, Ed. Addison-Wesley, 2001, pp. 29-51
- [6] Habetha, J. and Mangold, S. and Wiegert, J(2001)., "802.11 versus HiperLAN/2 - a comparison of decentralized and centralized MAC protocols for multihop ad hoc radio networks", in *Proceedings of 5th World Multiconference on Systemics, Cybernetics and Informatics, Orlando, USA*, pp. 33-40,