



A STATIC DESIGN AND ANALYSIS OF MULTI PLATE CLUTCH SUBJECTED TO STRESS CONDITIONS

KOLA NAVEEN, M.Tech Student, Dept of Mechanical-CAD/CAM, Brilliant grammar school educational institutions group of institutions integrated campus, T.S, India

G.SORNA LATHA, Assistant Professor, Dept of Mechanical-CAD/CAM, Brilliant grammar school educational institutions group of institutions integrated campus, T.S, India

ABSTRACT

A clutch is a mechanical gadget which accommodates the transmission of energy (and in this way typically movement) from one part (the driving part) to another (the determined part). The inverse part of the grasp is the brake. A multi plate grip might be utilized when a substantial torque is to be transmitted. Within circles are secured to the determined shaft to allow hub movement. The outside circles are held by screws and are attached to the lodging which is keyed to the driving shaft. The multi plate grasps are widely utilized as a part of engine autos, motorbikes, machine devices and so forth. Within plates are normally made of steel and outside circles is generally made of bronze. The materials utilized for covering of erosion surfaces are Cork, Rubber, Cast press, Powder metal. The point of the undertaking is to plan a multi plate grip by utilizing experimental recipes. A 2D drawing is drafted for multi plate grip from the counts and a 3D show is made in the 3D demonstrating programming Creo. We are directing basic investigation for above plan for approving outline. We are directing investigation by changing the contact surfaces material. By extricating the outcome we will discover which material is best for the covering of rubbing surfaces. Auxiliary examination is improved the situation multi plate grip utilizing the properties of the two materials. Materials utilized for liner is Cork, Powder metal. Correlation is improved the situation most importantly materials to approve better covering material for multi plate grasp under the diverse coefficient of rubbing conditions is done in ANSYS programming. Configuration is finished by Creo programming

INTRODUCTION

INTRODUCTION TO CLUTCHES:

Grasp (clutch) is an instrument for transmitting pivot, which can be locked in and withdrawn. Grasps are helpful in gadgets that have two pivoting shafts. In these gadgets, one shaft is normally determined by

an engine or pulley, and the other shaft drives another gadget. Give us a chance to take an example where one shaft is driven by an engine and alternate drives a penetrate hurl. The grip interfaces the two shafts so they can either be bolted together and turn at a similar speed (connected with), or be decoupled and turn at various paces (withdrew). Contingent upon the introduction, speeds, material, torque delivered lastly the utilization of the entire gadget, various types of grips are utilized. The grasp in itself is an instrument, which utilizes distinctive arrangements and diverse standards in different models accessible. In the accompanying lines, we have given the various types of grasps that are accessible.

Various types Of Clutches

Grating Clutch

Grating grips are the most normally utilized grasp components. They are utilized to transmit torque by utilizing the surface grating between two appearances of the grasp.

Puppy Clutch

A puppy grasp couples two pivoting shafts or other turning parts not by grating, but rather by impedance. Both the parts of the grasp are outlined with the goal that one pushes into the other, making both pivot at a similar speed, so they never slip.

Cone Cutch

Cone grasps are nothing, however frictional grips with funnel shaped surfaces. The range of contact varies from ordinary frictional surfaces. The conelike surface gives a decrease, which implies that while a given

measure of inciting power brings the surfaces of the grip into contact truly gradually, the weight on the mating surfaces increments quickly.

INTRODUCTION:

CREO

1. CAD

PC helped plan (scoundrel) is characterized as any movement that includes the viable utilization of the PC to make, adjust, investigate, or archive a building outline. Computer aided design is most regularly connected with the utilization of an intelligent PC illustrations framework, alluded to as creep framework. The term CAD/CAM framework is utilized on the off chance that it bolsters fabricating and in addition plan applications

2. Prologue to CREO

CREO is a suite of projects that are utilized as a part of the plan, examination, and assembling of a for all intents and purposes boundless scope of item.

CREO is a parametric, highlight based strong displaying framework, "Highlight based" implies that you can make part and gathering by characterizing highlight like cushion, rib, openings, gaps, rounds, et cetera, rather than determining low-level geometry like lines, curves, and circle& highlights are indicating by setting esteems and qualities of component, for example, reference planes or surfaces heading of creation, design parameters, shape, measurements and others.

"Parametric" implies that the physical state of the part or get together is driven by the qualities doled out to the traits (fundamentally measurements) of its highlights. Parametric may characterize or alter a component's measurements or different traits whenever.

For instance, if your outline goal is with the end goal that a gap is focused on a piece, you can relate the dimensional area of the opening to the square measurements

utilizing a numerical recipe; if the square measurements change, the focused gap position will be recomputed naturally.

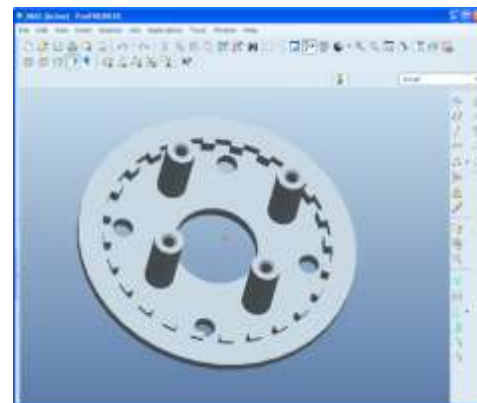
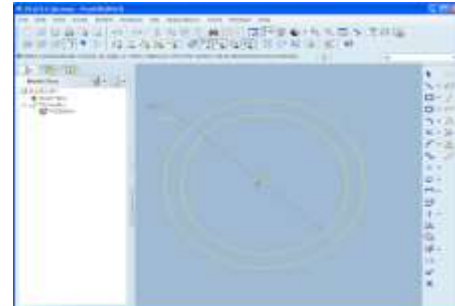
"Strong Modeling" implies that the PC model to make it ready to contain all the data that a genuine strong protest would have. The most valuable thing about the strong displaying is that it is difficult to make a PC show that is vague or physically non-feasible.

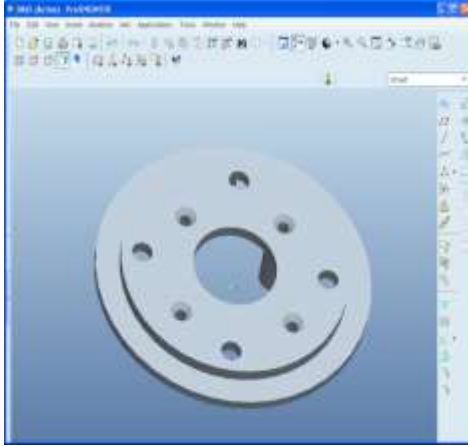
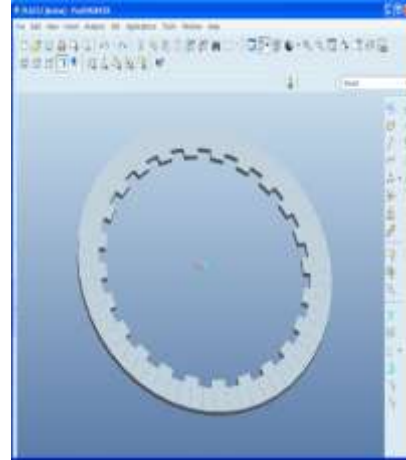
There are six center CREO ideas. Those are:

- Solid Modeling
- Feature Based
- Parametric
- Parent/Child Relationships
- Associative
- Model Centric

3 Capabilities and Benefits:

MODEL OF MULTIPLATE CLUTCH



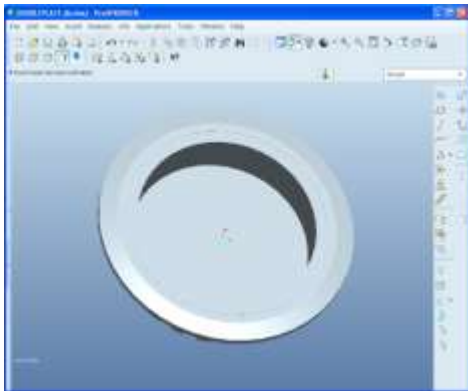
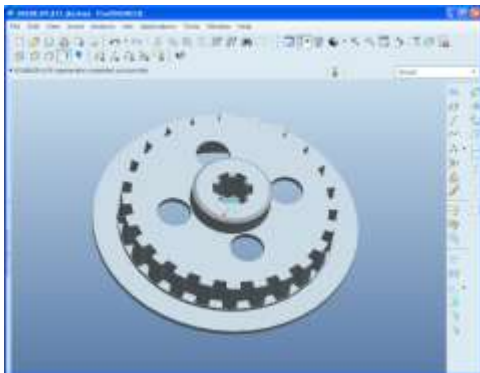
**DOUBLE PLATE****FRICTION PLATE 2****CAE-ANALYSIS TOOL
ANSYS(Analytical System)
ANALYSIS**

ANSYS is an Engineering Simulation Software (PC helped Engineering). Its instruments cover Thermal, Static, Dynamic, and Fatigue limited component examination alongside different apparatuses all intended to help with the advancement of the item.

The organization was established in 1970 by Dr. John A. Swanson as Swanson Analysis Systems, Inc. SASI. Its basic role was to create and showcase limited component examination programming for auxiliary material science that could recreate static (stationary), dynamic (moving) and warm exchange (warm) issues. SASI built up its business in parallel with the development in PC innovation and designing needs. The organization developed by 10 percent to 20 percent every year, and in 1994 it was sold. The new proprietors took SASI's driving programming, called ANSYS®, as their leader item and assigned ANSYS, Inc. as the new organization name.

Advantages OF ANSYS:

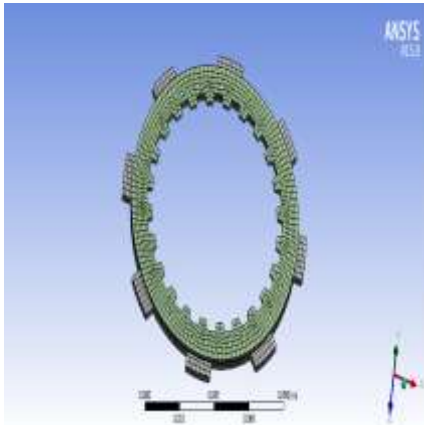
- The ANSYS favorable position and advantages of utilizing a secluded reproduction framework in the plan procedure are very much archived. As per contemplates performed by the Aberdeen Group, best-in-class organizations perform more recreations prior. As a pioneer in

**FRICTION PLATE 1**

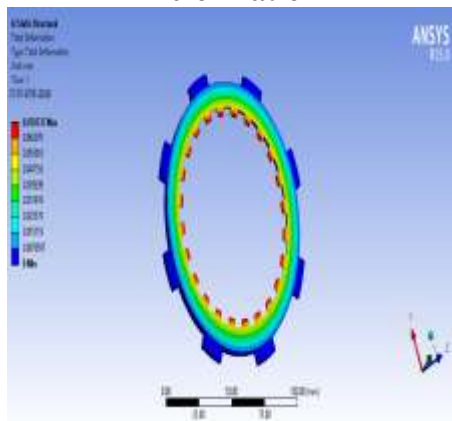
virtual prototyping, ANSYS is unmatched as far as usefulness and power important to streamline parts and frameworks.

- The ANSYS advantage is very much recorded.
- ANSYS is a virtual prototyping and particular recreation framework that is anything but difficult to utilize and stretches out to address client issues, making it a low-risk investment that can expand as esteem is exhibited inside an organization. It is versatile to all levels of the association, degrees of investigation intricacy, and phases of item advancement.

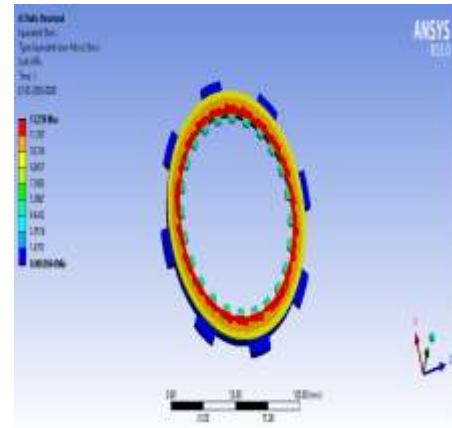
STRUCTURAL ANALYSIS



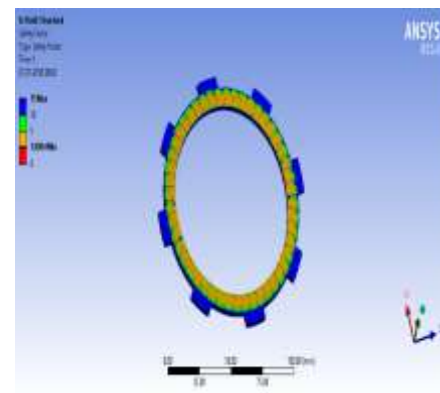
Meshing
RESULTS:
Deformation



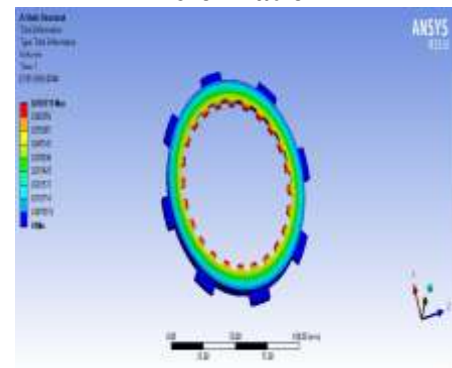
Stress



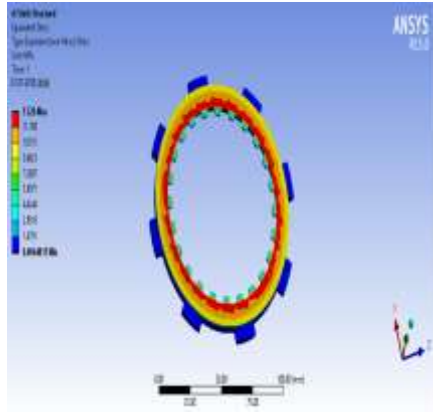
Fos



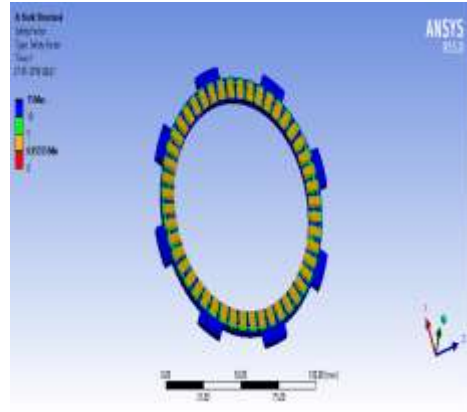
0.15 Friction
Deformation



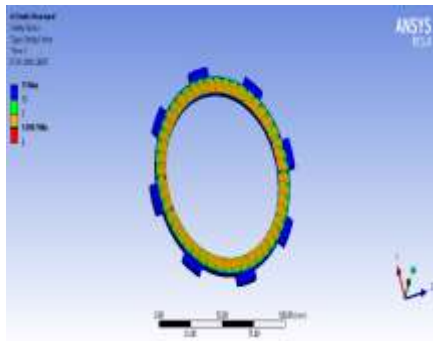
Stress



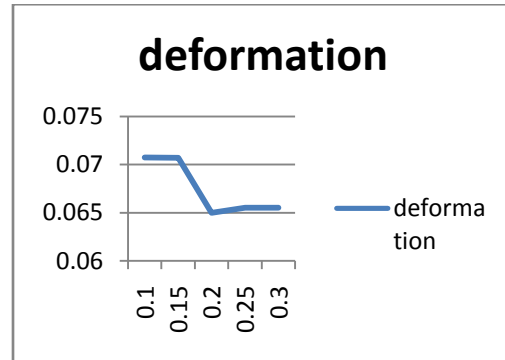
Fos



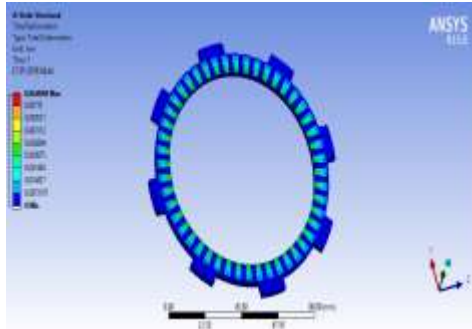
0.25 Friction
Graphs:
Cork results



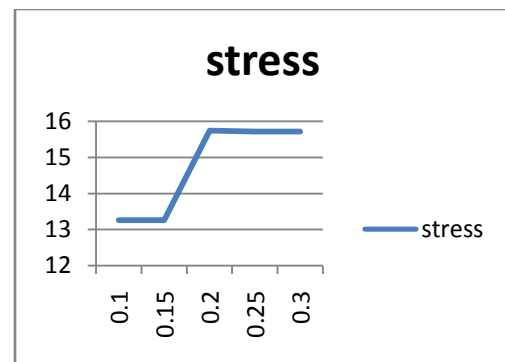
0.2 Friction
Deformation



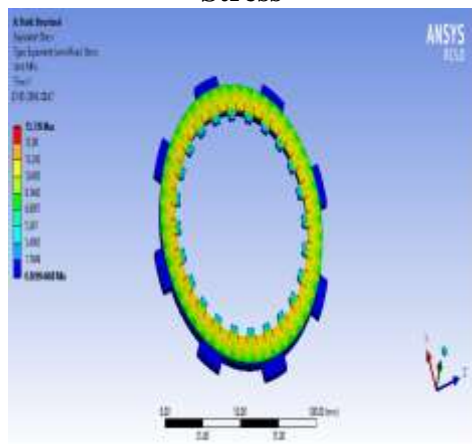
From the above results we observing while coefficient of friction is increasing the deformation decreasing and then slight increase is there



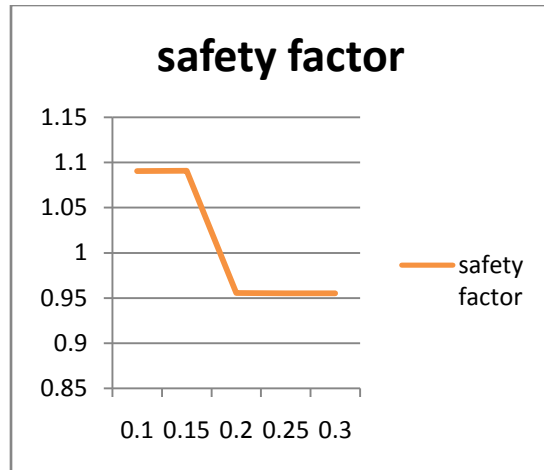
Stress



from above results we consider that while increasing friction the stress values also increasing



Fos



For this while increasing friction the safety factor decreasing.

CONCLUSION

In this venture the grip plate has been outlined by utilizing lowlife instrument creo-2 and afterward bringing in into CAE device (Ansys Work Bench) and the grasp plate made up of steel and bronze materials and stopper as an erosion material in the middle

For stopper material we connected 0.25Mpa weight on that and figured outcomes like mis-shapening, stress and wellbeing factor

From the above outcomes we recognized one issue with existing material while expanding coefficient of contact the anxiety esteem likewise expanded and to stay away from this and we picked copper powder metal and examined with same limit conditions. The changing materials having less anxiety esteems contrast with existing material and have great wellbeing factor esteems.

At long last the cu powder metal has less distortion and stress esteems and high security factor and solidness contrast with stopper comes about.

BIBLIOGRAPHY

- Machine Design by R.S. Khurmi
- Machine Design by R.K.Jain