

EXTENDED CONTROLLABILITY OF HVDC CONVERTERS IN THE VECTOR SPACE (EPS) THI SYSTEM

Sheik.China Saida
Electrical Power System
Sana Engineering College
Email:raviteja.pid@gmail.com

Mr.P. Ravi Teja M.Tech
Asst. Prof. Dept Of Eee
Sana Engineering College
Email:saida.china7@gmail.com

Abstract:

This project investigates that controllability of secluded multilevel converters to secondary voltage immediate current provisions. Those paper gives a in-depth examination of a computationally proficient technique should ascertain those obliged measure of triplen harmonic injection (THI) What's more will devise an over modulation technique In light of An three-dimensional representational of the converter control voltages in the vector space. The suggested strategy permits synchronous converter operation and control personal satisfaction control clinched alongside an enlarged ac voltage extend without debasing those sub modules (SM's) capacitor voltage swell or spectra from claiming produced waveforms for admiration to well-known THI systems. Those preferences of the introduced techno babble for admiration to conventional THI systems are: In the converter controllability will be enlarged .Throughout ac-side voltage disturbances; second, those SM's capacitor voltage swell is upper bounded; and third, those encasing stress because of the common-mode voltage toward the transformer's optional windings will be minimized. The execution of the guaranteed offers may be underpinned via reenactment comes about to both steady-state What's more transient operating states.

Keywords: Voltage control, HVDC transmission, Windings, Capacitors

CHAPTER 1

INTRODUCTION

WITH the approach of High-Voltage Direct Current (HVDC) converters in the power conveyance industry, extensive consideration has been paid to the advancement of converter topologies and control procedures keeping in mind the end goal to boost the productivity of the AC/DC-DC/AC transformation process. In addition, the HVDC vitality market will keep

encountering development for the following 20 years [1], [2] at a rate of USD 2 bn/year [3]. For example, the UK's National Grid set out its intend to grow new power transmission framework in Great Britain with joined capital and operational consumption of USD 31.2 bn for the period 2013 to 2021 [4]. While the HVDC advertise development has been basically empowered by the quickened initiation of the Modular Multilevel Converter (MMC) [5], encourage upgrades in HVDC converter innovation, for example, a diminished converter measure for each unit control, synchronous control of dynamic and receptive power conveyance, DC blame blocking capacities and incorporation with multi-terminal DC transmission plans offered by best in class topologies [6], for example, Alternate Arm Converter (AAC) [7] are relied upon to keep on intensifying the interest in the HVDC transmission business.

HVDC transmission plans mean to boost the created DC voltage with a specific end goal to limit control misfortunes along the DC transmission line. It is notable that the utilization of triplen symphonious infusion (THI) expands the AC voltages created by the converter for a given DC voltage [8], [9]. Customarily, the choice of an appropriate THI strategy for three-stage converters has been founded on the accompanying three components: exchanging misfortunes, add up to symphonious mutilation (THD) at the transformer's essential winding, and regular mode voltage at the optional windings as for ground [10] because of its

connection to expanded spillage streams, likelihood of flashover [11] and consistence with EMI measures. Be that as it may, in MMC's the exchanging recurrence is not subject to the triplen music segment. THD in MMC's is not viewed as an issue because of the expansive number of arrangement associated sub modules (SM's) per converter Arm. Hence, for a given appraised top estimation of the basic mode voltage, the most imperative basis for the determination of the zero-succession (ZS) segment might be the RMS basic mode voltage, because of the anxiety it delivers on the optional windings of the transformer, surge arresters and stage reactors. Another vital part of HVDC MMC's is that the produced voltages on the converter side confines the converter's capacity to oversee voltage unsettling influences and its controllability run for a given evaluated AC voltage. Therefore, the utilization of over regulation strategies can be consolidated with THI so as to acquire a bigger basic voltage part at least included impression and cost, to the detriment of presenting a specific measure of consonant twisting in the produced waveform [12]. Space Vector Modulation (SVM) procedures [13] give visual understanding of the converter voltage era process. In spite of the fact that SVM strategies are notable in three-stage inverter frameworks [14], the advantages of SVM connected to HVDC converters has not yet been examined inside and out. Working the HVDC Voltage Source Converters (VSC's) under uneven network conditions represents a test from the control viewpoint. The creators of [15] recognize the significance of AC voltage aggravations in MMC and feature the absence of writing in the issue.

A portion of the specialized writing on operation of HVDC VSC's under the nearness of AC voltage unsettling influences handle this issue by flowing ZS streams inside the converter [16]– [21], in

inconvenience of contorting the DC ebbs and flows and adding many-sided quality to the controller to make up for this impact. Be that as it may, none of these examine the capability of utilizing SVM to adjust for transient AC voltage aggravations. Besides, the greater part of the current writing precludes the impact of such aggravations on the converter controllability. The commitments of this paper are: i) another way to deal with apply SVM strategies to the HVDC MMC topology, which expands the converter's controllability run with reaction times unattainable by customary tap-changer and AC voltage control systems; ii) a nitty gritty examination of the impacts of the proposed SVM procedure on key converter factors, for example, Chain joins vitality adjust and SM capacitor voltage swell; iii) a base THI strategy for the previously mentioned technique which limits the regular mode voltage worry at the transformer's optional windings and sets an upper bound on the SM capacitor voltage swell; and iv) a computationally proficient calculation, appropriate for ongoing mechanical usage.

1.1 POWER CONVERTERS

In this task, a cross breed photovoltaic-power module PV/FC framework for network association is proposed. PV and Fuel cells delivers low voltage dc yield. Framework interconnection of PV/FC framework requires control converters to meet the lattice necessities like voltage adequacy, recurrence, and stage point. In the first place change over the low voltage dc into high voltage dc by utilizing support dc-dc converter and after that change over this dc voltage into air conditioning by utilizing inverters lastly associate the entire framework to lattice. This sort of framework (dc-dc and dc-air conditioning transformation) is called two phase change frameworks. For two phases change of

cross breed framework requires following force converters.

1. DC-DC CONVERTERS
2. INVERTERS (DC-AC CONVERTERS)
- 2.2 DC-DC CONVERTERS

1.3 TYPES OF DC-DC CONVERTERS

1.3.1 NON-ISOLATED DC-DC CONVERTERS

There are five fundamental sorts of converter in this non-secluding bunch they are

- o Buck Converter
- o Boost Converter
- o Buck-Boost Converter
- o Cook Converter

1.3.2. Disengaged DC-DC CONVERTERS

There are two primary sorts of secluding inverter in like manner utilize they are

- o Fly back converter
- o Forward sort converter

1.4 BOOST CONVERTER

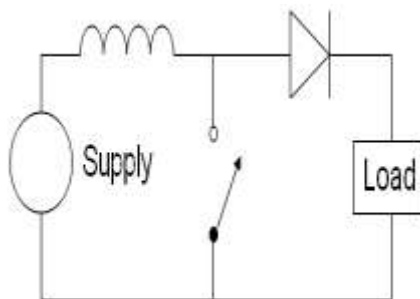


Fig: 1.1 The Basic Schematic Of A Boost Converter

The essential guideline of a Boost converter comprises of 2 unmistakable states (see figure 2.2):

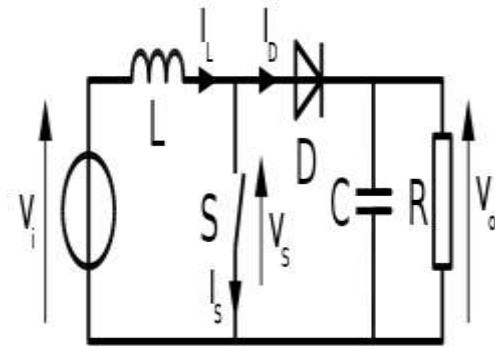


Fig 1.2 Overall diagram of Boost converter

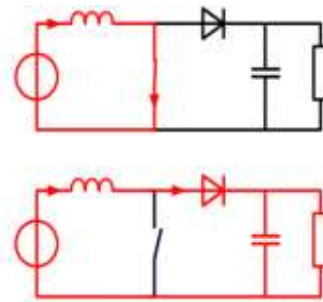


Fig 1.3 The Two Configuration Of Boost Converter, Depending On The State Of The Switch S

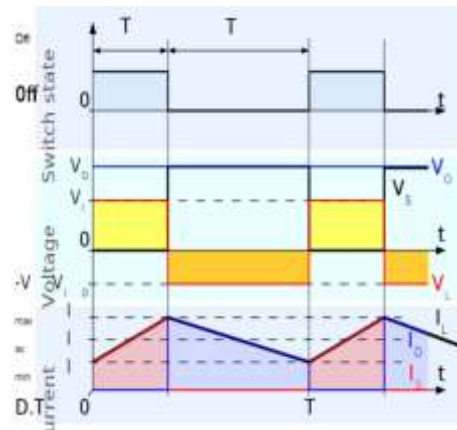


Fig. 1.4: Waveforms Of Current And Voltage In A Boost Converter Operating In Continuous Mode

Amid the Off-express, the switch S is open, so the inductor current courses through the heap. In the event that we consider zero voltage drops in the diode, and a capacitor sufficiently substantial for its voltage to stay steady, the development of I_L is:

$$V_i - V_o = L (di_L)/dt$$

Consequently, the variety of IL amid the Off-period is:

$$\Delta I_{off} = \int_{DT}^{T} (V_i - V_o) dt / L = ((V_i - V_o)(1-D)T) / L$$

As we consider that the converter works in relentless state conditions, the measure of vitality put away in each of its parts must be the same toward the start and toward the finish of a substitution cycle. Specifically, the vitality put away in the inductor is given by: $E = 1/2 LI_L^2$

In this way, the inductor current must be the same toward the begin and end of the replacement cycle. This implies the general change in the current (the entirety of the progressions) is zero:

$$\Delta I_{Lon} + \Delta I_{Loff} = 0$$

Substituting ΔI_{LON} and ΔI_{LOFF} by their looks yields:

$$\Delta I_{Lon} + \Delta I_{Loff} = (V_i DT) / L + ((V_i - V_o)(1-D)T) / L = 0$$

This can be composed as: $V_o / V_i = 1 / (1 - D)$

This thus uncovers the obligation cycle to be: $D = 1 - V_o / V_i$

The above articulation demonstrates that the yield voltage is constantly higher than the information voltage (as the obligation cycle goes from 0 to 1), and that it increments with D, hypothetically to limitlessness as D approaches 1. This is the reason this converter is some of the time alluded to as a stage up converter.

2.6 Types of VSI

Half-Bridge VSI

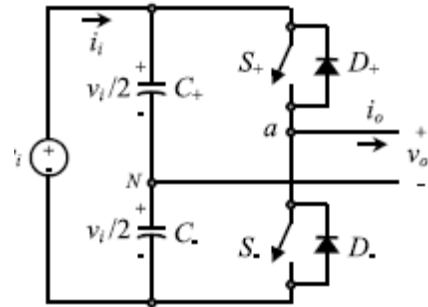
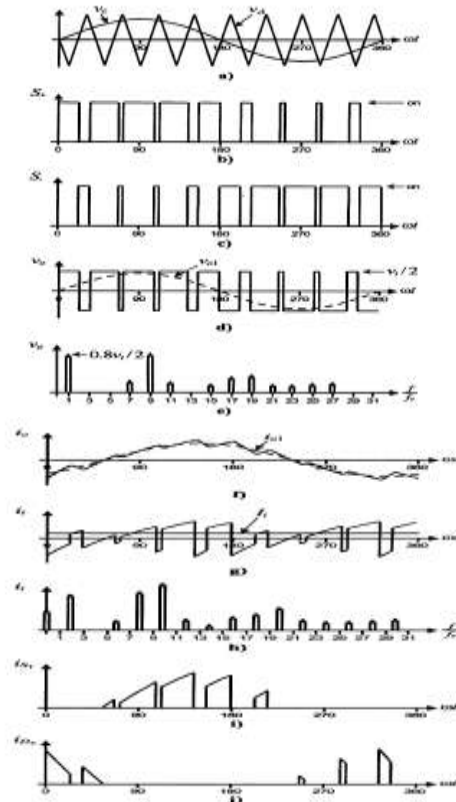


FIGURE 14.2 Single-phase half-bridge VSI.

Fig 1.5 Single phase half bridge VSI

Demonstrates the perfect waveforms related with the half-connect inverter appeared in Fig... The states for the switches S. what's more, See are characterized by the adjusting system, which for this situation is a bearer based PWM.



Will be discussed later); (b) for odd values of the normalized carrier frequency of the harmonics in the ac output voltage appear at normalized frequencies he centered around mf and its multiples, specifically,

$$h = lm_f \pm k \quad l = 1, 2, 3, \dots$$

Where $k = 2; 4; 6; \dots$ for $l = 1; 3; 5; \dots$; and $k = 1; 3; 5; \dots$ for $l = 2; 4; 6; \dots$; (c) the amplitude of the ac output voltage harmonics is a function of the modulation index m_a and is independent of the normalized carrier frequency m_f for $f > 9$; (d) the harmonics in the dc link current (due to the modulation) appear at normalized frequencies f_{op} centered around the normalized carrier frequency m_f and its multiples, specifically,

$$p = lm_f \pm k \pm 1 \quad l = 1, 2, \dots$$

Where $k = 2; 4; 6; \dots$ for $l = 1; 3; 5; \dots$; and $k = 1; 3; 5; \dots$ for $l = 2; 4; 6; \dots$. Extra vital issues are: (a) for little estimations of ($m_f < 21$), the transporter flag v_D and the balancing signal v_c ought to be synchronized to each other (m_f whole number), which is required to hold the past components; if this is not the situation, sub sounds will be available in the air conditioner yield voltage; (b) for vast estimations of ($m_f > 21$), the sub music are unimportant if an offbeat PWM system is utilized, in any case, because of potential low-arrange sub music, its utilization ought to be maintained a strategic distance from; at long last (c) in the over adjustment locale ($m_a > 1$) a few convergences between the bearer and the tweaking signal are missed, which prompts the era of low-arrange music however a higher central air conditioning yield voltage is gotten; sadly, the linearity amongst m_a and v_{ol} achieved in the direct district does not hold in the over regulation area, also, an immersion impact can be watched

The PWM system permits an air conditioner yield voltage to be created that tracks a given regulating signal. An exceptional case is the SPWM strategy (the regulating signal is a sinusoidal) that gives in the direct locale an air conditioner yield voltage that shifts straightly as an element of the balance file and the sounds are at very much characterized frequencies and amplitudes.

These elements disentangle the plan of sifting segments. Tragically, the greatest adequacy of the crucial air conditioning voltage is $V_I=2$ in this working mode. Higher voltages are gotten by utilizing the over tweak district ($m_a > 1$); be that as it may, low-arrange music show up in the air conditioner yield voltage.

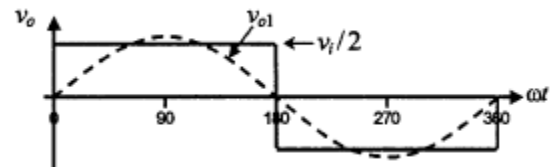


Fig 1.6 SPWM

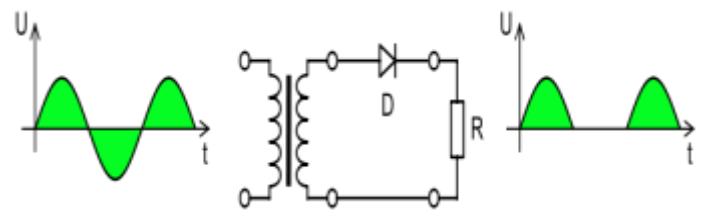


Fig 1.7 half wave rectifier

The output DC voltage of a half wave rectifier can be calculated with the following two ideal equations:

$$V_{rms} = \frac{V_{peak}}{2}$$

$$V_{dc} = \frac{V_{peak}}{\pi}$$

1.8 FULL-WAVE RECTIFICATION

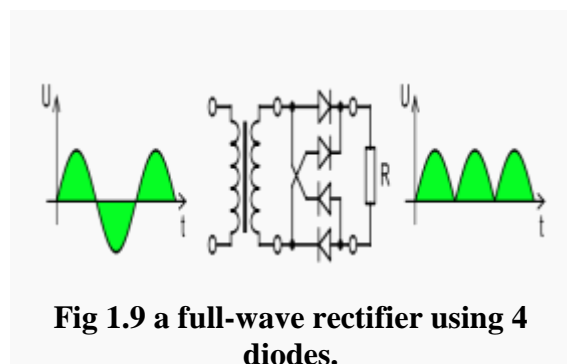


Fig 1.9 a full-wave rectifier using 4 diodes.

For single-phase AC, if the transformer is center-tapped, then two diodes back-to-back (i.e. anodes-to-anode or cathode-to-cathode) can form a full-wave rectifier. Twice as many windings are required on the transformer secondary to obtain the same output voltage compared to the bridge rectifier above.

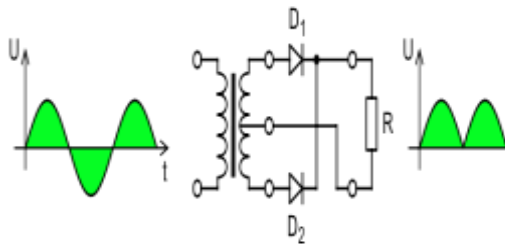


Fig 2.0 Full-wave rectifier using a center tap transformer and 2 diodes.

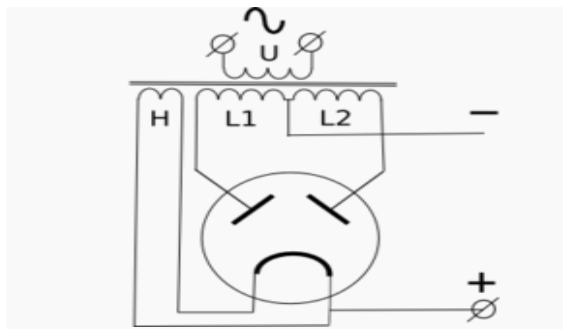


Fig 2.1 Full-wave rectifier, with vacuum tube having two anodes.

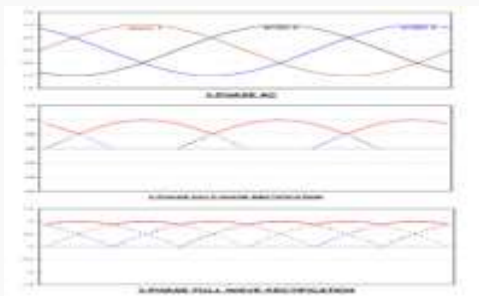


Fig 2.2 3-phase AC input, half & full wave rectified DC output waveforms

The normal and root-mean-square yield voltages of a perfect single stage full wave rectifier can be figured as:

$$V_{dc} = V_{av} = \frac{2V_p}{\pi}$$

$$V_{rms} = \frac{V_p}{\sqrt{2}}$$

Where:

V_{dc}, V_{av} - the average or DC output voltage,

V_p - the peak value of half wave,

V_{rms} - the root-mean-square value of output voltage.

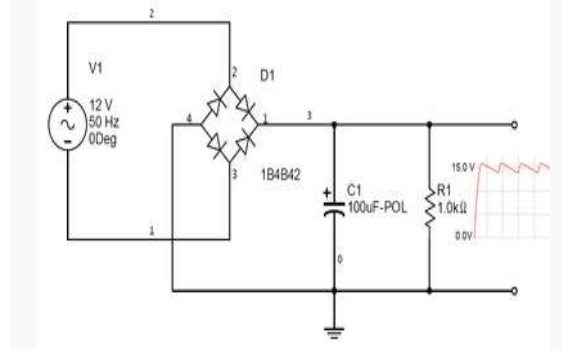


Fig 2.3 RC-Filter Rectifier

CHAPTER 2

HVDC

Over long separations mass power exchange can be completed by a high voltage coordinate current (HVDC) association less expensive than by a long separation AC transmission line. HVDC transmission can likewise be utilized where an AC transmission plan proved unable (e.g. through long links or crosswise over fringes where the two AC frameworks are not synchronized or working at a similar recurrence). Be that as it may, with a specific end goal to accomplish these long separation transmission joins, control convertor gear is required, which is a conceivable purpose of disappointment and any intrusion in conveyed power can be expensive. It is consequently of basic significance to plan a HVDC conspire for a given accessibility.

The HVDC innovation is a powerful gadgets innovation utilized as a part of electric power frameworks. It is an effective and adaptable strategy to transmit a lot of electric control over long separations by overhead

transmission lines or underground/submarine links. It can likewise be utilized to interconnect offbeat power frameworks. The essential procedure that happens in a HVDC framework is the change of electrical current from AC to DC (rectifier) at the transmitting end and from DC to AC (inverter) at the less than desirable end. There are three methods for accomplishing change

1. Natural commutated converters
2. Capacitor Commutated Converters
3. Forced Commutated Converters

SIMULATION RESULTS

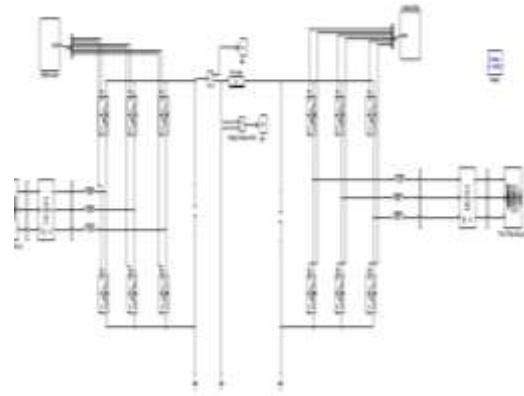
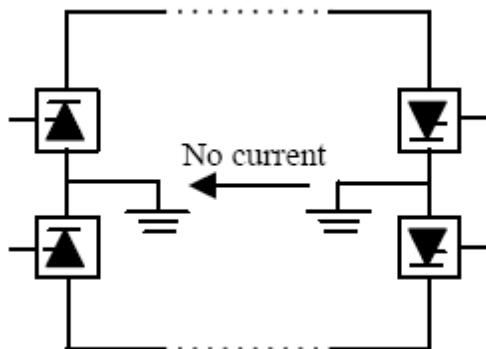


Fig 3.1 MATLAB/SIMULINK diagram of proposed system



2.4 Bipolar HVDC system:



2.5 Homo-polar HVDC system:

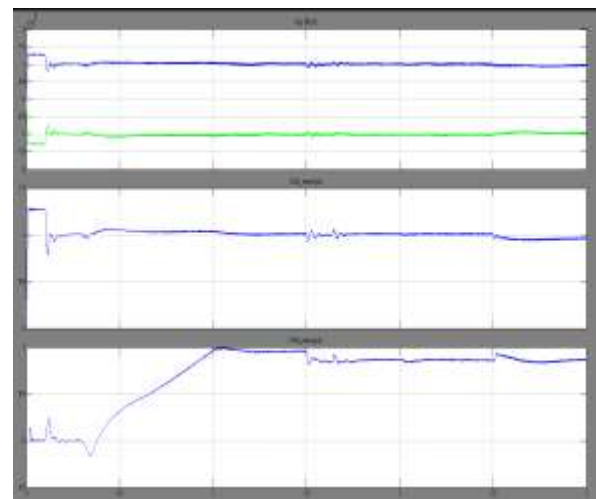
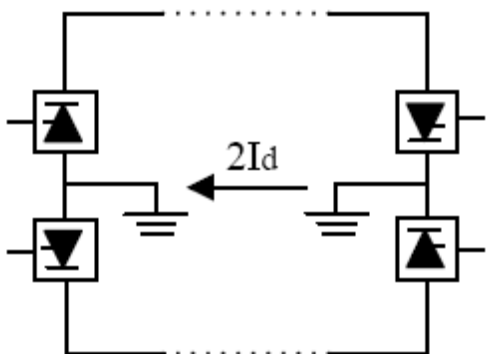


Fig 3.2 dc side station 1 outputs



Fig 3.3 bus 1 station1 outputs

CHAPTER 7

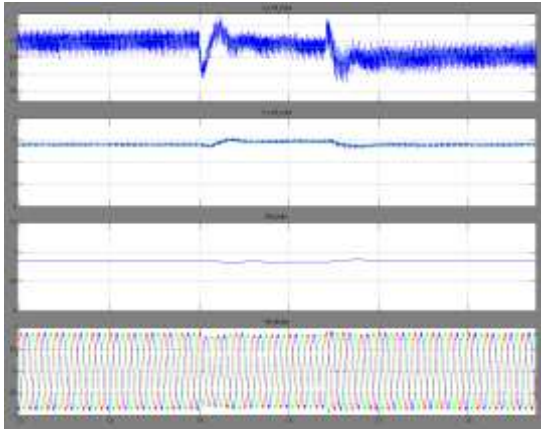


Fig 3.4 control signal of station 1

CHAPTER 3 CONCLUSION

An ideal THI strategy and additionally an expanded controllability procedure utilizing SVM for HVDC VSC's has been displayed. With the exhibited system, the converter's controllability range can be reached out by up to 10.26% as for customary THI strategies. Also, this permits a decrease of the AC voltage security edge which empowers a lessening of the unflinching state control misfortunes. Furthermore, the RMS regular mode voltage on the converter-side AC terminals can likewise be lessened for various working areas, in this manner diminishing the worry over the converter hardware protection. These advantages are achieved without debasing the SM capacitor voltage adjusting highlight or unearthly normal for the converter concerning conventional THI techniques. The introduced procedure constitutes an intense instrument to ride through AC voltage unsettling influences without bargaining the converter's controllability while it advances the power misfortunes of business HVDC converters for a given DC interface voltage, impression and cost.

REFERENCES

[1] National Grid UK, "UK Future Energy Scenarios," pp. 120–129, 2014.

[2] ENTSO-E, "Local Investment Plan North Sea area," 2015.

[3] Transparency Market Research, "Power Transmission Components Market - Global Industry Analysis, Size, Share, Growth Trends, and Forecast 2015 - 2023," 2014.

[4] Directorate-General for Energy, European Commission, Study on administrative motivators for interests in power and gas foundation ventures, 2014, p. 86, ISBN: 978-92-79-43682-6.

[5] A. Lesnicar and R. Marquardt, "A creative secluded multilevel converter topology reasonable for a wide power extend," in *Power Tech Conference Proceedings*, vol. 3, 2003, p. 6.

[6] M. A. Perez, S. Bernet, J. Rodriguez, S. Kouro, and R. Lizana, "Circuit topologies, displaying, control plans, and uses of measured multilevel converters," *Power Electronics, IEEE Transactions on*, vol. 30, no. 1, pp. 4–17, 2015.

[7] M. Merlin, T. C. Green, P. D. Mitcheson, D. R. Mentor, R. Critchley, W. Crookes, and F. Hassan, "The other arm converter: another crossover multilevel converter with dc-blame blocking capacity," *Power Delivery, IEEE Transactions on*, vol. 29, no. 1, pp. 310–317, 2014.

[8] D. G. Holmes, "The essentialness of zero space vector situation for bearer based pwm plans," *Industry Applications, IEEE Transactions on*, vol. 32, no. 5, pp. 1122–1129, 1996.

[9] F. Moreno, M. Merlin, D. Mentor, T. Green, and K. Dyke, "Zero stage arrangement voltage infusion for the other arm converter," in *AC and DC Power Transmission, eleventh IET International Conference on. IET*, 2015, pp. 1–6.

[10] H. Pinheiro, F. Botter'on, C. Rech, L. Schuch, R. Camargo, H. Hello, H. Gr'undling, J. Pinheiro et al., "Space vector regulation for voltagesource inverters: a bound together approach," in *IECON 02 [Industrial Electronics Society, IEEE 2002 28th Annual Conference of the]*, vol. 1. IEEE, 2002, pp. 23–29.

[11] J. Li, W. Sima, C. Sun, and S. A. Sebo, "Utilization of spillage streams of covers to decide the stage qualities of the flashover procedure and defilement level expectation," *Dielectrics and Electrical Insulation, IEEE Transactions on*, vol. 17, no. 2, pp. 490–501, 2010.

[12] J. Holtz, W. Lotzkat, and A. M. Khambadkone, "On persistent control of pwm inverters in the overmodulation go including the six-stage mode,"



Power Electronics, IEEE Transactions on, vol. 8, no. 4, pp. 546– 553, 1993.

[13] A. M. Hava, R. J. Kerkman, T. Lipo et al., "Basic investigative and graphical techniques for bearing based pwm-vsi drives," *Power Electronics, IEEE Transactions on*, vol. 14, no. 1, pp. 49– 61, 1999.

[14] H. Mulder, "SVM space vector adjustment," *GE Industrial Systems, UPS Product Management, Tech. Rep. White Paper No. 2*, 2003.

[15] Y. Zhang, J. Ravishankar, and R. Li, "Displaying and control of measured multi-level converter based hvdc frameworks utilizing symmetrical parts," in *Environment and Electrical Engineering (EEEIC), 2015 IEEE fifteenth International Conference on. IEEE, 2015*, pp. 1910– 1915.