

OVERVIEW ON COLUMN CHROMATOGRAPHY

Ranjit Tukaram Mali, Sudhir Bhausaheb Jadhav, Chhagan Bhaurao Rathod, Pankaj Shivnathrao Gat, Tulsidas Radheshyam Khirodkar, Prasad Bharat Dagade

Gajanan Maharaj College Of Pharmacy, Chh.Sambhajinagar.

khirodkartulsidas@gmail.com

Dr. Kavita Kulkarni (Phd.Mpharm), Department of Quality Assurance

Gajanan Maharaj College Of Pharmacy

Chh.Sambhajinagar.

Abstract:

Chromatography is a method used for separating organic and inorganic compounds. The word chromatography means "color writing". Chromatography is based on differential migration. The mobile phase moves through the stationary phase(column) picking up the compounds to be tested. As the mobile phase continues to travel through the stationary phase it takes the compounds with it. The classical preparative chromatography column, is a glass tube with a diameter from 5 mm to 50 mm and a height of 5 cm to 1 m. Thus, 25 g of adsorbent is required to provide a better separation in a 1 cm diameter column than in a 2 cm diameter column. As the technique column chromatography is more productive in qualitative and quantitative aspects scientists thought to improve its application in many fields. They worked on the technique to reduce the disadvantages by changing the column size, particle size of the stationary phase, changing the composition of the mobile phases etc. In the advancements of their works they developed the techniques like Flash chromatography, High Performance Liquid Chromatography, Gas Chromatography, Ultra Performance Liquid Chromatography and Ultra Performance Convergence Chromatography (Super Critical chromatography). The aim of the article is to specify the changes that the scientists have made in each and every step to improve the technique (column chromatography). Now over 60% of chemical analysis worldwide is currently done with chromatography.

Keywords- column chromatography, methodologies, Stationary Phase

Introduction:

Chromatography is an essential analytical technique widely used in pharmaceutical sciences for the separation, identification, and purification of compounds. Among various chromatographic methods, column chromatography stands out for its versatility and effectiveness in handling complex mixtures, making it a valuable tool in both research and industrial applications.

Column chromatography operates on the principle of differential partitioning between a stationary phase and a mobile phase. It involves packing a column with a stationary phase, typically silica gel or alumina, which interacts with the compounds in the mixture as they are eluted through the column by a solvent (the mobile phase). The separation occurs based on various properties such as polarity, size, and molecular weight, leading to distinct bands of different components.

Column chromatography is a versatile separation technique widely used in chemistry and biochemistry for purifying and isolating compounds. The method involves a stationary phase, typically a solid or viscous liquid packed into a

column, through which a mobile phase—usually a solvent or a mixture of solvents—flows. As the sample mixture is introduced into the column, different components interact with the stationary phase to varying degrees, leading to their separation based on their affinities.

History:

Early Foundations

1930s: Silica Gel and Adsorption Chromatography

The introduction of silica gel as a stationary phase revolutionized column chromatography. It provided a more consistent and effective medium for separation.

This period also saw the emergence of various chromatography techniques, including adsorption chromatography, which exploited the different adsorption properties of compounds.

The Rise of Liquid Chromatography

1940s: Gas Chromatography and its Influence

Archer John Porter Martin and Richard L. M. Synge developed gas chromatography, which enabled the separation of volatile compounds. Their work earned them the Nobel Prize in Chemistry in 1952.

Gas chromatography highlighted the importance of precise control over the mobile phase and paved the way for advancements in liquid chromatography.

1950s: High-Performance Liquid Chromatography (HPLC)

The development of HPLC in the 1950s allowed for higher pressures in liquid

chromatography, significantly improving separation efficiency and speed. This was made possible by advances in pump technology and column design.

HPLC became a standard technique in analytical chemistry, especially for pharmaceutical analysis, where it allowed for rapid and reliable identification and quantification of compounds.

Technological Innovations and Applications.

PRINCIPLE:

The principle of column chromatography is based on the differential partitioning of components in a mixture between a stationary phase and a mobile phase. Here's how it works:

Stationary Phase: This is the solid or viscous liquid that is packed inside the column. It provides a surface for the components of the mixture to interact. Common materials include silica gel or alumina.

Mobile Phase: This is the solvent or solvent mixture that moves through the column, carrying the sample components along with it. The choice of mobile phase affects the separation efficiency.

Separation Mechanism: When a mixture is applied to the top of the column, different components interact with the stationary phase to varying extents. Those that have a stronger affinity for the stationary phase will move more slowly, while those that have a weaker affinity will move faster. This difference in movement leads to the separation of components as they travel through the column.

Elution: As the mobile phase continues to flow, the separated components exit the column at different times. This process is called elution, and it can be monitored to collect fractions containing the desired compounds.

Factors Affecting Separation: The effectiveness of separation is influenced by several factors, including the nature of the stationary and mobile phases, temperature, flow rate, and the size and polarity of the molecules being separated.

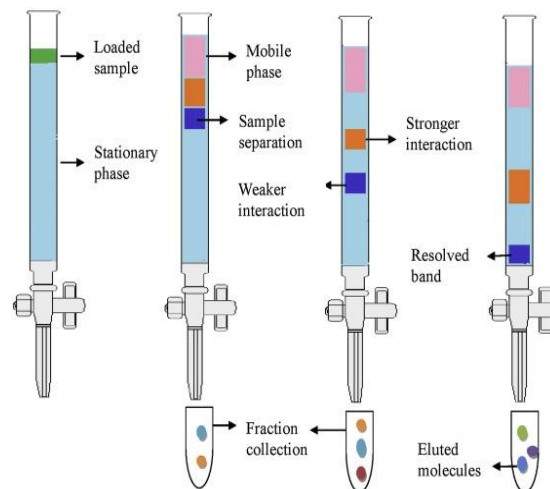
Overall, column chromatography capitalizes on the differences in physical and chemical properties of the components in a mixture, allowing for efficient separation and purification.

INSTRUMENTATION :

The instrumentation used in column chromatography varies depending on the specific type (e.g., normal-phase, reversed-phase, high-performance liquid chromatography) and application. Here's a detailed overview of the key components and instruments typically involved:

instrument list:

- 1 mobile phase
- 2 sample injector
- 3 pumps
- 4 sample loop
- 5 temperature control unit



1. Column

Design: The column is typically a long, cylindrical tube made of glass or stainless steel. It can vary in length and diameter, influencing separation efficiency and resolution.

Packing Material: The stationary phase is packed inside the column, which can be silica gel, alumina, polymeric resins, or specialized materials, depending on the type of chromatography.

2. Mobile Phase Delivery System

Pumps: High-pressure pumps (in HPLC) are used to deliver the mobile phase at a controlled flow rate. These pumps are critical for maintaining consistent pressure and flow, which are essential for reproducibility.

Solvent Reservoirs: Containers that hold the solvents or solvent mixtures used as the mobile phase.

3. Sample Injector

Manual or Automatic Injectors: Devices used to introduce the sample into the column. Automatic injectors are preferred for high-throughput applications, allowing for precise and reproducible sample introduction.

Sample Loop: In automatic systems, a sample loop is often used to hold a specific volume of the sample before it is injected into the flow path.

4. Detection System

Detectors: Various types of detectors are used to identify and quantify the compounds as they elute from the column:

UV-Visible (UV-Vis) Detector: Measures the absorbance of eluted compounds at specific wavelengths.

Fluorescence Detector: Detects compounds that fluoresce, providing higher sensitivity for specific analytes.

Mass Spectrometer (MS): Provides structural information and quantification by measuring the mass-to-charge ratio of ions, often coupled with chromatography (LC-MS).

Refractive Index (RI) Detector: Measures the change in the refractive index of the mobile phase as different compounds elute.

Conductivity Detector: Used primarily for ion chromatography, measures the conductivity of the eluent.

5. Data Acquisition and Control System

Computer Software: Used for data collection, analysis, and interpretation. Software allows for integration of peaks, quantification, and visualization of chromatograms.

Control Systems: Monitor and control various parameters, such as flow rate, pressure, temperature, and detector response.

6. Column Temperature Control

Temperature Control Unit: Maintains a consistent temperature during the separation process, which can influence retention times and resolution.

7. Fraction Collector

Automated Fraction Collectors: Collect eluted fractions at predetermined intervals or based on detector signals. This is particularly useful for isolating and purifying specific compounds from the mixture.

8. Additional Accessories

Guard Columns: Placed before the main column to protect it from contaminants and prolong its life.

Degassers: Remove dissolved gases from the mobile phase to prevent bubble formation, which can disrupt flow and affect detection.

Filter Units: Ensure that the mobile phase is free from particulates that could clog the column.

Objectives of column chromatography :

1. Separation of Components

To effectively separate the individual components of a mixture based on their chemical and physical properties, such as polarity, size, or charge.

2. Purification

To purify target compounds from impurities or undesired byproducts, ensuring that the final product is of high purity suitable for further analysis or application.

3. Isolation of Specific Compounds

To isolate specific compounds of interest from complex mixtures, such as natural extracts, reaction mixtures, or biological samples.

4. Characterization and Analysis

To characterize the separated compounds through subsequent analytical techniques, such as mass spectrometry (MS), nuclear magnetic resonance (NMR) spectroscopy, or ultraviolet-visible (UV-Vis) spectroscopy.

5. Scale-Up for Industrial Applications

To enable the scaling up of separation processes for industrial applications, such as the production of pharmaceuticals, fine chemicals, or food products.

6. Method Development and Optimization

To develop and optimize chromatographic methods for improved efficiency, resolution, and reproducibility, tailoring conditions to specific separation requirements.

7. Understanding Chemical Interactions

To gain insights into the interactions between different chemical species and the stationary and mobile phases, enhancing knowledge in areas such as physical chemistry and materials science.

8. Quality Control and Assurance

To ensure the quality and safety of products, particularly in pharmaceuticals and food industries, by analyzing the composition and purity of final products.

9. Environmental Monitoring

To analyze and separate environmental samples for the detection of pollutants or contaminants, contributing to environmental science and regulatory compliance.

10. Research and Development

To support research in various scientific fields by providing a reliable method for separating and purifying compounds for further studies, such as biological activity assays or synthesis processes.

Types of column chromatography:

Column chromatography encompasses several types, each tailored for specific applications, separations, and sample characteristics. Here's a detailed overview of the main types of column chromatography:

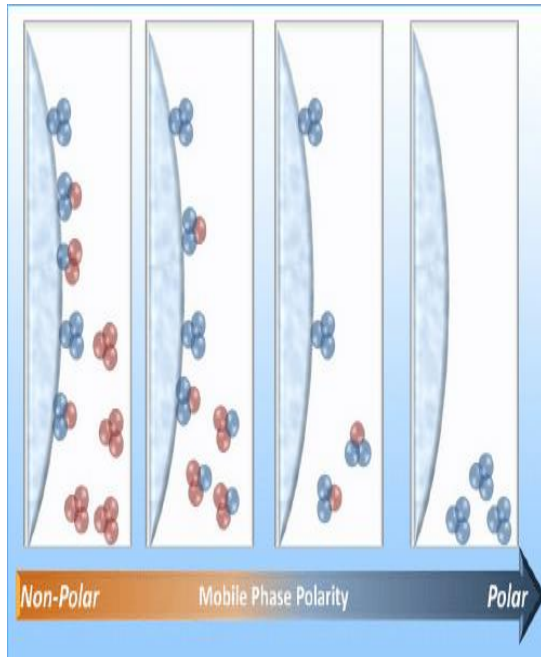
1. Normal-Phase Chromatography (NPC)

Principle: In normal-phase chromatography, the stationary phase is polar (e.g., silica gel or alumina), and the mobile phase is nonpolar (e.g., hexane or chloroform).

Mechanism: Compounds are separated based on their polarity. Polar compounds have a stronger interaction with the stationary phase and elute more slowly, while nonpolar compounds elute faster.

Applications: Used for separating polar compounds, such as alcohols, amines, and carboxylic acids. Common in the analysis of natural products and organic

compounds.



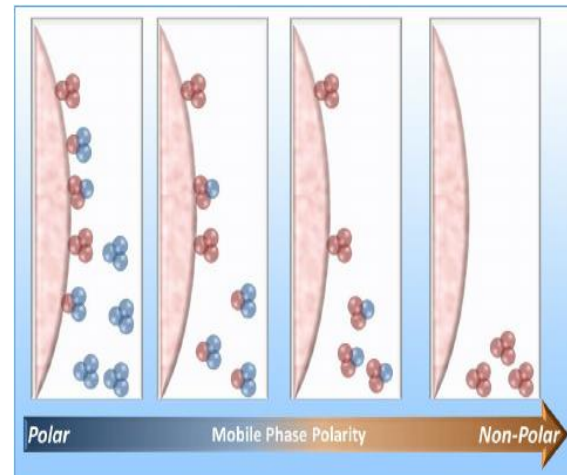
2. Reversed-Phase Chromatography (RPC)

Principle: In reversed-phase chromatography, the stationary phase is nonpolar (e.g., C18-bonded silica), while the mobile phase is polar (e.g., water or a water-organic solvent mixture).

Mechanism: Compounds are separated based on their hydrophobicity. Nonpolar compounds interact strongly with the nonpolar stationary phase and elute slower, while polar compounds elute faster.

Applications: Widely used for pharmaceuticals, biomolecules (proteins, peptides, nucleotides), and environmental samples. It is the most common type of

chromatography in analytical chemistry.

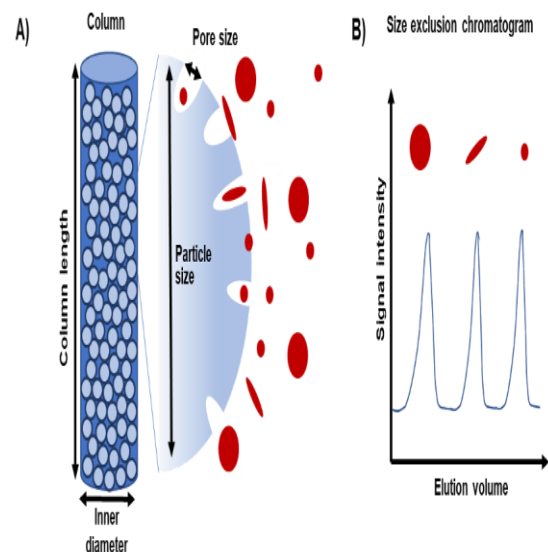


3. Size-Exclusion Chromatography (SEC)

Principle: Also known as gel filtration or gel permeation chromatography, SEC separates molecules based on their size.

Mechanism: The stationary phase consists of porous beads. Larger molecules are excluded from the pores and elute first, while smaller molecules enter the pores and elute later.

Applications: Commonly used for purifying proteins, polymers, and other macromolecules, as well as analyzing molecular weight distributions.

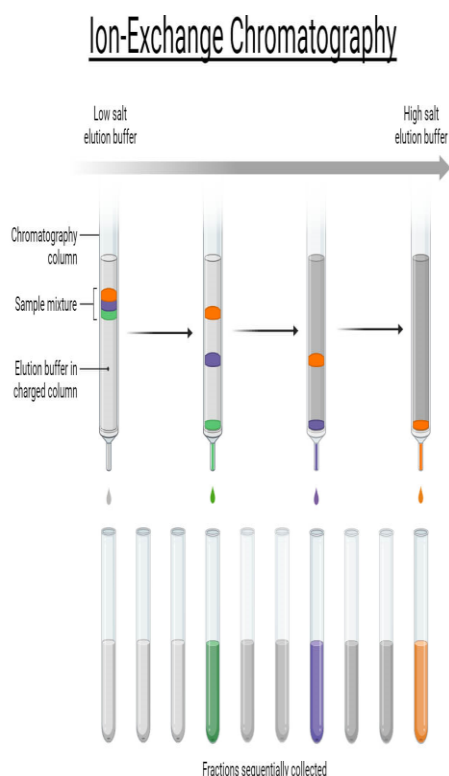


4. Ion-Exchange Chromatography (IEC)

Principle: This type separates charged particles based on their ionic interactions with the stationary phase, which is charged (either cationic or anionic).

Mechanism: Cation-exchange chromatography uses a negatively charged stationary phase to attract and retain positively charged ions (cations), while anion-exchange chromatography uses a positively charged stationary phase for negatively charged ions (anions).

Applications: Widely used for purifying proteins, nucleic acids, and other biomolecules, as well as in water treatment and analysis of ionic species.



5. Affinity Chromatography

Principle: This technique relies on specific interactions between a target

molecule and a ligand immobilized on the stationary phase.

Mechanism: The stationary phase is modified with a ligand that specifically binds to the target molecule (e.g., antibodies, enzymes). Non-target molecules are washed away, and the target is eluted by changing conditions (e.g., pH, salt concentration).

Applications: Commonly used for purifying biomolecules, particularly proteins and antibodies, from complex mixtures. It's highly specific and efficient for isolating target compounds.

6. High-Performance Liquid Chromatography (HPLC)

Principle: HPLC is a sophisticated form of liquid chromatography that uses high pressure to push the mobile phase through the column.

Mechanism: Combines aspects of both normal and reversed-phase chromatography, allowing for high-resolution separations. It can utilize various stationary phases and mobile phase compositions.

Applications: Widely used in pharmaceuticals, biochemistry, environmental analysis, and food science. It allows for the analysis of a broad range of compounds, including small molecules and large biomolecules.

7. Supercritical Fluid Chromatography (SFC)

Principle: SFC uses supercritical fluids (often carbon dioxide) as the mobile phase, which exhibit properties of both gases and liquids.

Mechanism: The supercritical fluid provides high diffusivity and low viscosity, leading to fast separations. Compounds are separated based on their solubility in the supercritical phase.

Applications: Useful for separating thermally labile compounds and in chiral separations. It's increasingly used in pharmaceutical and chemical industries for environmentally friendly processes.

8. Flash Chromatography

Principle: A rapid technique that uses pressurized flow to separate compounds on a preparative scale.

Mechanism: The stationary phase is packed in a column, and the mobile phase is pushed through under pressure, allowing for quicker elution of compounds.

Applications: Common in organic synthesis for purifying reaction products, particularly when time is a factor. It's less complex than HPLC and is often used for quick separations in laboratories.

9. Capillary Column Chromatography

Principle: Utilizes narrow-bore capillary columns for separation, often seen in gas chromatography.

Mechanism: The small diameter enhances resolution and reduces sample size requirements, providing high sensitivity and efficiency.

Applications: Primarily used in gas chromatography for volatile compounds and trace analysis in complex mixtures.

METHODOLOGIES:

The methodologies used in column chromatography involve a series of

systematic steps that ensure effective separation, purification, and analysis of compounds. Here's a detailed breakdown of the typical methodologies, applicable to various types of column chromatography:

1. Preparation of the Column

Selection of Stationary Phase: Choose an appropriate stationary phase based on the target compounds and the type of chromatography (e.g., silica gel for normal-phase, C18 for reversed-phase).

Column Packing:

Wet Packing: Dissolve the stationary phase in a solvent, pour it into the column, and allow it to settle under gravity or with slight pressure to create a uniform packing.

Dry Packing: Use dry stationary phase material, ensuring an even layer without air bubbles, often applied in flash chromatography.

Equilibration: Wash the packed column with the mobile phase to equilibrate it, ensuring that the stationary phase is properly conditioned and free from impurities.

2. Sample Preparation

Sample Dissolution: Dissolve the sample in a small volume of an appropriate solvent, often the same as or compatible with the mobile phase to ensure effective loading onto the column.

Filtration: Filter the sample solution to remove particulate matter that could clog the column.

Concentration: If necessary, concentrate the sample to enhance detection and improve separation efficiency.

3. Sample Loading

Injection: Load the sample onto the top of the column using a syringe, sample loop (in HPLC), or through a dedicated sample injector.

Application Technique: Ensure the sample is applied evenly and not causing disturbance in the stationary phase.

4. Elution

Choice of Mobile Phase: Select a solvent or mixture of solvents for the mobile phase based on the polarity, solubility, and chemical nature of the target compounds.

Gradient Elution (if applicable): Use a gradient elution technique where the solvent composition is gradually changed (e.g., increasing polarity) to enhance the separation of compounds.

Flow Rate Control: Maintain a consistent flow rate throughout the elution process to ensure reproducibility.

5. Monitoring Elution

Detection Methods: Use appropriate detectors to monitor the elution of compounds as they exit the column:

UV-Vis Detector: Commonly used for compounds that absorb UV light.

Fluorescence Detector: Suitable for fluorescent compounds.

Mass Spectrometry: Coupled techniques for detailed compound identification.

Chromatogram Generation: Record the detector response over time to generate a chromatogram, allowing for identification and quantification of eluted compounds.

6. Fraction Collection

Manual or Automated Fraction Collector: Collect fractions at specified intervals based on time or detector signals. This allows for isolation of specific compounds from the mixture.

Recombination of Fractions: Analyze fractions to determine which contain the target compound, and recombine if necessary.

7. Data Analysis

Integration of Peaks: Analyze the chromatogram by integrating peaks corresponding to individual compounds to quantify their concentrations.

Identification: Use retention times and detector responses to identify compounds, often comparing to standards or using spectral data (e.g., MS, NMR).

8. Column Cleaning and Maintenance

Cleaning Protocols: After use, clean the column by flushing with suitable solvents to remove residual compounds and contaminants.

Storage: Store the column under appropriate conditions to maintain its integrity and performance, often using a compatible solvent to prevent drying out.

9. Method Validation (if applicable)

Reproducibility: Perform multiple runs to ensure consistent results.

Linearity and Range: Validate the method by testing a range of concentrations to establish a calibration curve.

Limit of Detection (LOD) and Limit of Quantification (LOQ): Determine the sensitivity of the method to detect and quantify low concentrations of the target compounds.

applications

Column chromatography is a versatile technique used in a variety of fields for the separation, purification, and analysis of compounds. Here are some key applications across different domains:

1. Pharmaceutical Industry

Drug Purification: Used to isolate and purify active pharmaceutical ingredients (APIs) from reaction mixtures or fermentation products.

Quality Control: Employed in the testing of drug formulations for purity and potency, ensuring compliance with regulatory standards.

Stability Testing: Analyzing degradation products and stability of pharmaceutical compounds over time.

2. Biotechnology and Life Sciences

Protein Purification: Techniques like affinity chromatography are used to isolate proteins, antibodies, and enzymes from complex biological mixtures (e.g., cell lysates).

Nucleic Acid Purification: Column chromatography is used for purifying DNA and RNA, essential for molecular biology applications such as cloning and sequencing.

Metabolomics: Analyzing metabolites in biological samples to understand metabolic pathways and disease mechanisms.

3. Environmental Analysis

Pollutant Detection: Used for isolating and quantifying pollutants (e.g., pesticides, heavy metals) from environmental samples like soil, water, and air.

Wastewater Treatment: Monitoring contaminants in wastewater to ensure compliance with environmental regulations.

Soil Analysis: Characterizing soil components and determining the presence of organic compounds or pollutants.

4. Food and Beverage Industry

Flavor and Aroma Analysis: Separating and analyzing volatile compounds in food products to assess flavor profiles and quality.

Additive and Contaminant Testing: Testing for preservatives, colorants, and contaminants in food and beverages to ensure safety and compliance.

Nutraceuticals: Purifying bioactive compounds from natural sources for use in dietary supplements.

5. Chemical Research and Development

Synthetic Chemistry: Purifying reaction products, intermediates, and by-products in organic synthesis.

Natural Product Isolation: Isolating and characterizing compounds from natural sources (e.g., plants, fungi) for pharmacological or industrial applications.

Method Development: Optimizing chromatographic conditions to improve separation and efficiency for new compounds.

6. Clinical Diagnostics

Biomarker Analysis: Isolating and quantifying biomarkers from biological fluids (e.g., blood, urine) for disease diagnosis and monitoring.

Toxicology: Analyzing biological samples for the presence of drugs, metabolites, or toxins to assess exposure or overdose situations.

7. Forensic Science

Drug Testing: Analyzing samples from individuals to detect the presence of illicit substances or performance-enhancing drugs.

Trace Evidence Analysis: Separating and identifying trace materials found at crime scenes, such as fibers or residues.

Toxicological Studies: Investigating the presence of harmful substances in biological samples related to criminal investigations.

8. Cosmetic Industry

Ingredient Purification: Isolating active ingredients from plant extracts or synthetic sources for use in cosmetics and skincare products.

Stability and Efficacy Testing: Assessing the stability of cosmetic formulations and the performance of active ingredients.

9. Industrial Applications

Catalyst Recovery: Purifying and recycling catalysts used in industrial processes to enhance sustainability and reduce costs.

Polymer Analysis: Characterizing polymer samples to determine molecular weight distribution and composition.

10. Research and Academia

Educational Purposes: Teaching chromatography principles and techniques in laboratories for students in chemistry, biology, and environmental science.

Experimental Research: Investigating new compounds, reactions, and processes in various research fields.

Key Takeaways:

Versatility: The variety of column chromatography methods, such as normal-phase, reversed-phase, size-exclusion, ion-exchange, and affinity chromatography, allows researchers to tailor their approach based on the specific characteristics of the compounds being analyzed.

Advanced Techniques: Innovations such as high-performance liquid chromatography (HPLC), supercritical fluid chromatography (SFC), and two-dimensional chromatography enhance the efficiency, resolution, and speed of separations, meeting the demands of increasingly complex analytical challenges.

Critical Role in Quality Control: In industries like pharmaceuticals and food safety, column chromatography is essential for ensuring product purity, compliance with regulatory standards, and the identification of contaminants.

Interdisciplinary Applications: The technique is applicable in diverse domains, from drug development and environmental monitoring to forensic investigations and

academic research, illustrating its importance in both applied and fundamental science.

Continuous Advancements: Ongoing developments in instrumentation, methodologies, and automation are likely to enhance the capabilities and efficiency of column chromatography, making it an even more powerful tool for researchers and industries alike.

conclusion:

Column chromatography is a fundamental technique in analytical and preparative chemistry, offering versatile solutions for the separation, purification, and analysis of complex mixtures. Its applications span a wide range of fields, including pharmaceuticals, biotechnology, environmental science, food and beverage safety, forensic analysis, and industrial processes.

References:

1. Laurence M. Harwood, Christopher J. Moody. *Experimental organic chemistry: Principles and Practice*. Wiley, John & Sons, Incorporated 1989. p. 180–5.
2. Das M, Dasgupta D. Pseudo-affinity column chromatography based rapid purification procedure for T7 RNA polymerase. *Prep BiochemBiotechnol*1998;28:339–48.
3. Karlsson E, Ryden L, Brewer J. *Protein Purification. Principles, High Resolution Methods, and Applications, 2nd Edition, Ion exchange chromatography*. Wiley-VCH, New York;1998.
4. Amercham Biosciences, *Ion Exchange chromatography, Principles and methods*, Amercham Pharmacia. Biotech, SE 751;2002.
5. Walls D, Sinéad T. Loughran. *Protein Chromatography: Methods and Protocols, Methods in Molecular Biology*.vol. 681;2011.

6. Helmut D. *Gel Chromatography, Gel Filtration, Gel Permeation, Molecular Sieves. A laboratory Hand book*, Springer-Verlag;1969.

7. Determann H. *Gel Chromatography Gel Filtration· Gel Permeation· Molecular Sieves: A Laboratory Handbook Chapter 2. Materyals and Methods*; 2012.

8. Wilchek M, Chaiken I. *An overview of affinity chromatography in affinity chromatography–Methods and protocols*. Humana Press 2000. p. 1–6.

9. Firer MA. *Efficient elution of functional proteins in affinity chromatography*. *J BiochemBiophys Methods* 2001;49:433–42.

10. Stoddard JM, Nguyen L, Mata-Chavez H, Nguyen K. *TLC plates as a convenient platform for solvent-free reactions*. *Chem Commun (Camb)* 2007;12:1240–1.

11. M.S.Schreiber, "75 Years of Chromatography-an Historical Dialogue", Elsevier Scientific Publishing Company, Amsterdam-Oxford New York (1979)413.

12. J.G.Kirchner, "75 Years of Chromatography-an Historical Dialogue", Elsevier Scientific Publishing Company, Amsterdam- Oxford-New York (1979)201.

13. Application Sheet No 909100-0271 Supelco Inc.

14. X. Yang, T. Fukushima, T. Santa, H. Homma and K. Imai, *Analyst*,122(1997)1365. 15. T. Toyo'oka and Y. Liu, *Analyst*, 120(1995)285.

16. S. Chen, Y. Liu, D. W. Armstrong, J. I. Borrell, B. Martinez- Teipel and J. L. Matallana, *J. Liq. Chromatogr.*, 18(8)(1995)1495.

17. Ken Hosoya, Masashi Teramachi and Nobuo Tanak in cooperation with, Atsushi Kobayashi, Taketoshi and YurakaOhtsu, *Analyst*.,